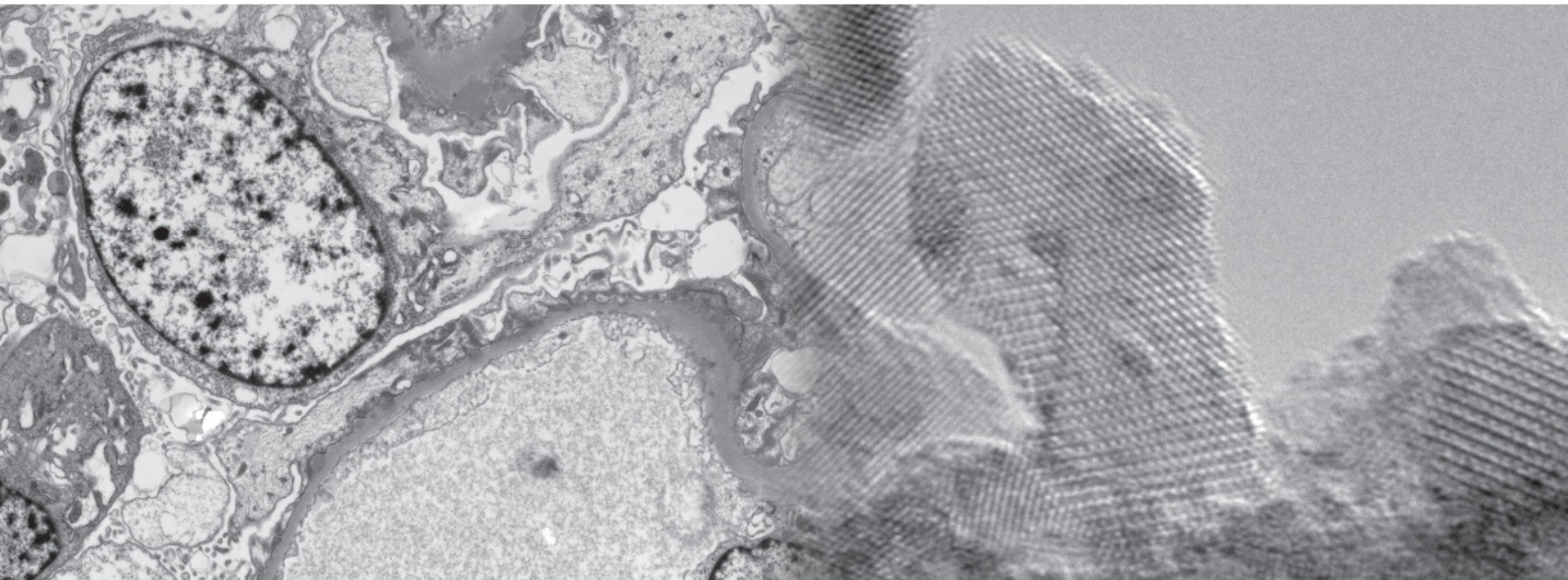




16 MegaPixel TEM Camera

Morada^{G3}

Largest Field of View available



- **16 MegaPixel**
- **More than 12 fps**
- **Very large Field of View**
- **Perfect resolution**

16 MegaPixel TEM Camera

Morada^{G3}

The 16 MegaPixel TEM CCD camera Morada^{G3} is EMSIS' reinvention of the first commercially available 11 MegaPixel TEM CCD camera Morada.

As it was true for the previous versions of the Morada^{G3} it offers again best value for all TEM applications which require an extremely large field of view combined with highest resolution, high frame rates and excellent contrast.

The combination of advanced CCD technology and electronics enables high-speed performance while the high-precision, rigid, patented mechanics ensures always perfect focus. Fast viewing modes allow the user to find specimen areas of interest quickly and efficiently, and to simultaneously zoom into interesting details without any delay.

The Morada^{G3} provides up to 16 MegaPixel (depending on TEM type used), resulting in the largest field of view currently available for TEM cameras for the side mount port ("35mm"). The 7.4 μm x 7.4 μm pixel size combined with the dedicated high quality lens optics ensures perfect resolution and high sensitivity.

Perfectly resolved images in low and mid-range magnifications are most easy to achieve.

The scintillators, optimized for the high tension of the TEM used, deliver a perfect signal-to-noise ratio, resulting in an outstanding image with optimal resolution.

Specifications

Chip Type	Interline CCD
Mounting Position	Side entry (35mm) - Single port
Optics	Lens (~1:1)
Full Resolution	4872 x 3248 pixel
Resolution binning 4x	1218 x 812 pixel
Pixel Size	7.4 μm x 7.4 μm
Eff. Pixel Size	7.4 μm x 7.4 μm
Field of View	35 x 24 mm ²
Frame Rate @ Full Resolution	3 fps
Frame Rate @ Binning 4x	> 12 fps
Digitization	14 bit
Partial Readout	yes
Binning	1x, 2x, 4x
Exposure Time	100 ms - 10 sec
Computer Interface	FireWire (IEEE1394a)
Control Software	RADIUS 1.4 (Windows TM 7, 32 or 64 bit) and higher

Windows 7 is a trademark of Microsoft Corp.
Specifications are subject to change without further notice.



EM SIS GmbH

Mendelstraße 17 | 48148 Münster | Germany
fon: +49 251 297962-2
info@emsis.eu
www.emsis.eu